



Sun & Sun
Group

SUN & SUN GROUP PROFILE



Sun & Sun Group

The underlying strength of The Sun & Sun Group lies in the fact that no one person believes in taking the credit of its success single handedly. The group is an amalgam of various companies, working together under one group. Unity is its strength. It is a perfect example of a family run business where everyone is collectively involved in its progress.

It was started in 1962 by Vaidya Pandit Laxmikant, the Pharmacy was started as a small unit. Later on the business was expanded in the field of Ayurvedic Medicine, Allopathic Drugs & Cosmetics, Gudakhu, Gold & Silver Jewelers, Food/Grain Preservation, Education, Mining, Real Estate and Housing and Software Development besides Export/Import of different commodities.

Their Nari Sanjeevani, Bijli Tel, Himdhara Tel, Amber Pain Bam, Charmolin Malham are quite famous products. Presently, they are producing scented POTO mosquito coil on a large scale.

Late. Laxmikant Sharma, Mr. Kailash Chand Sharma & Brijmohan Sharma from Chhattisgarh, were the three pillars who incorporated the sharma Group, which dealt in a business of medicines for many years. Even today, these three generation live together in a joint family. Mr. Rajendra Sharma, Mr. Manoj Sharma, Mr. Sanjay Sharma, Mr. Dinesh Sharma, Mr. Mahesh Sharma, Mr. Sunil Sharma, Mr. Shyam Sharma & late Mr. Ram Sharma's family live together. This new generation has 11 brothers. Together under the umbrella of the Sharma Group, they have varied businesses like Gold & silver (Retail & Wholesale), Cold Storage, Cattle feed Industry, Ayurvedic Medicine Manufacturer, Real Estate, Education etc.

Sun & Sun Group is a propagator of the age-old joint family system. The continuous progress of the Sun & Sun Group lies in the collective strength of its family members who have given their heart & soul to it.



Sharma Family

LATE SHRI LK SHARMA
SHRI SC SHARMA (Grand-Father)
SHRI RM SHARMA

SAUNDRA SHARMA
EDUCATION: BACHELOR OF COMMERCE (B.COM)
WORK: Sun & Sun Jewellers (Retail & Wholesale) Chhattoogh Jewellers Pvt. Ltd.

MANOJ SHARMA (Father)
EDUCATION: MASTER OF COMMERCE
WORK: SHARMA INDUSTRIES, GHOSH SAZAR

SANJAY SHARMA (Dad)
EDUCATION: BACHELOR OF COMMERCE
WORK: MNTU INTERNATIONAL SCHOOL, SANDEEP COLD STORAGE

SONU SHARMA (Dad)
EDUCATION: BACHELOR OF COMMERCE
WORK: SANDEEP COLD STORAGE, SUN & SUN COLD STORAGE

DINESH SHARMA
EDUCATION: BACHELOR OF COMMERCE
WORK: PURCHASE & MARKETING FOR ALL FACTORIES

DR. MUKESH SHARMA
EDUCATION: B.COM, MBA, LL.B, MCA, PHD
WORK: SHARMA INDUSTRIES, SPARKHANA

SHYAM SUNDAR SHARMA
EDUCATION: BACHELOR OF COMMERCE
WORK: SUN & SUN INFRA METRIC PVT. LTD, SUN & SUN CATTLE FEED, SHR APULCATTLE FEED

MANOJ SHARMA
EDUCATION: BACHELOR OF COMMERCE (B.COM), MASTER OF BUSINESS ADMINISTRATION
WORK: SUN & SUN JEWELLERS CHHATTISGARH JEWELLERS

SANDEEP SHARMA (Principle Assistant)
EDUCATION: BACHELOR OF COMMERCE (B.COM), MCA, ST. JOSEPHS COLLEGE OF COMMERCE, MBA, MANAGE MONKIE INSTITUTE OF MANAGEMENT STUDIES, MUMBAI
WORK: SUN & SUN INFRA METRIC PVT LTD.

TANUJAY SHARMA
 STUDENT

NEHAJ SHARMA
 CMS, FROM BANGLORE
 WILL JOIN AFTER 3 YEARS

AJAY SHARMA
EDUCATION: B.COM (PT), RAJESHWAR UNIVERSITY, RAIPUR, MBA UNIVERSITY, BHARU
WORK: SANDEEP COLD STORAGE, FINANCE, SUN & SUN COLD & TRADE PVT LTD.

AKSHAY SHARMA
EDUCATION: B.COM (PT), RAJESHWAR UNIVERSITY, RAIPUR
WORK: SUN & SUN INFRA METRIC PVT LTD.

JAYAN SHARMA
 BBS in College
 Will Join After 3 Years

TANUJ SHARMA
EDUCATION: BACHELOR OF COMMERCE (B.COM), LLB
WORK: SHARMA INDUSTRIES, DURGAPURAM, SUN & SUN SOLUTIONS, ASSIST DINESH UNCLE, MARKETING & PURCHASING

ADITYA SHARMA
 BBA BBAIC COLLEGE
 Will Join After 3 Years



SUN & SUN
INFRAMETRIC PVT. LTD.

Over the years the group has built for itself an unshakable reputation for quality, efficiency, trust, meticulous planning, top quality amenities, superlative designs, timely completion, guaranteed possession and handing over of projects. The SSIPL Group is one of the most eminent real estate companies of Raipur. Here at SSIPL, we believe that our job is not just to build homes but also to build lifelong relationships..

No project is executed without the help of the finest architects, designers and contractors, and the end result is always splendid. Delving deeper into intricacies of real estate, we understand the needs of our clientele and realize that city life can often become a burden. Our homes are designed to interact with nature. As louver glass is utilized to allow sunlight through but no sunrays and as a result, dependency on natural light is maximized. Incorporating climatology into realty is just one of the several techniques that the SSIPL group has pioneered for indulgent living. Luxury is a priority and no compromises are made when it comes to the comfort of our valued customers

. Commercial spaces, malls, multiplexes and hotel are executed with as much precision as our residential projects and many of our prominent landmarks define the seductive development of Raipur. Because of our obsession with realty, the end result is always a landmark planned with passion!



SOLUS HOMES

A Project of 10000 sq.ft.
Constructed Area

Solus Homes has something to offer to those desirous of living at places which offer fantastic views & a feeling of being above all & sundry. The Solus Homes come in four storeys which you majestic view of th capital & town.



RIO - THE BUSINESS PLANET

A Project of 125,000 sq.ft. Constructed Area

Rio, a world of opportunities for business owners, is like their own business planet. Its coming in the heart of the business zone near Pachpedi Naka. A place which will provide an influential address to your business. With other upcoming top business opening their offices, its time to become a player in next set of business race.



SOLUS HEIGHTS
A Project of 4.5 lac sq.ft.
Constructed Area

Solus Heights is an exceptional luxury apartment that will leave no stone unturned to impress you. With an exceptional array of lifestyle amenities, coupled with newly upgraded elegant finishes, Solus Heights brings luxury, convenience, and warmth to your door. Discover the endless possibilities awaiting you here.



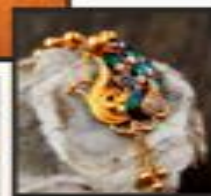
Believe only in Purity

Sun & Sun[®]
Jewellers

It was in 2000 that the Group ventured into wholesale trading of gold while retail showroom came up in 2007. Later they also started wholesale trade of silver. Their Sun & Sun Jewellers is an ISO 2008 certified company, which believes in establishing long-term relationships with its customers. This was not an overnight job. To win hearts one has to give quality & dedication for a number of years.

Earlier this business used to run on carats, but they converted it into percentage based. The underlying benefits is that at the time of buying, whatever percentage of gold buyer gets, he does not have to face any unnecessary cuts while selling the same. Usually 18 carat has 75% of gold while 22 carat has 91.6% & 23 carat has 95.83% of purity in it. While dealing in carats, the point something percentages were ignored which resulted in losses for buyers.

Sun & Sun Jewellers has always strived for the best. They have the best of skilled artisans from across the country who churn out exquisite pieces of jewellery in CG who have introduced the concept of Purity of gold % which brought a revolution in the jewellery market. They also believe in giving top notch after sales service to customers as it plays a vital role in developing bonds. For its exceptional services in the gold segment, the Sharma Group was felicitated with the 'Bharat Gaurav Award' for the year 2011.



Sun & Sun Jewellers wishes to keep the tradition of Indian Jewellery alive with added colour and design to add to the charm of the Contemporary Jewellery market. By serving the modern customer, it seeks to establish a new design in the market without compromising on the Indian traditional jewellery.



SUN & SUN
CATTLE FEED
PVT. LTD.



Sun & Sun Cattle Feed Industries was started in 2009-10 and built a feed manufacturing unit at Raipur, capital city of Chhattisgarh. The factory began its commercial production in 2009-10. With the continued improvement and innovation, Sun & Sun Cattle Feed Industries today occupies a pre-dominant position in the Cattle Feed business in the states of Chhattisgarh, Madhya Pradesh & Odisha. Also they are the pride manufacturers of leading cattle feed products like- DOODH JYOTI, DOODH AMRIT, DOODH SHAKTI, DOODH MAKHKHAN & SUPER DAIRY.

Our brand are well known for its Quality. Each and every raw materials and finished products are subject to stringent quality control analysis at the modern laboratory attached to the factory at Erode which also has facilities for all MYCOTOXIN analysis. All the raw materials are purchased on Quality guarantee basis only. Raw materials meeting the quality specification are only used for feed production. Finished product that meet our quality standards are dispatched to the market. Our growth of more than 700% in less than 4-5 years stands as a testimony to our commitment to quality.

The feed products manufactured by Sun & Sun Group have the nutritional values that meet International specifications and standards. They help the poultry and dairy farmers to increase productivity at the lowest cost, thus ensuring profitability and prosperity.



SUN AND SUN COLD STORAGE PVT. LTD.



SANDEEP
COLD
STORAGE

Sandeep Cold Storage: Capacity: 15000 Tonnes

Sun & Sun Cold Storage Pvt Ltd. Capacity: 5000 Tonnes

Our Cold Chains offers you a wide range of cooling and preservation solutions. Solutions tailored made to suit any industry that requires storage of perishable produce over extended periods of time without suffering any loss of quality- be it in look, feel, touch, taste or chemical composition.

Industries that find **SANDEEP / SUN AND SUN COLD STORAGE PVT. LTD.** enormously useful include the agriculture sector including horticulture and floriculture units, manufacturers of fresh produce of any kind, food processing units, pharmaceutical industries, seafood and other similar industries, as well as the dairy and hospitality sectors, including hotels, restaurants, and eateries.





(Regn No. 11638)

MINTU INTERNATIONAL SCHOOL



The school campus spreads across sprawling lush green campus of 30 acres land on Raipur Dhamtari Main road with one of the best school infrastructure amenities of Central India. The entire campus stands on 250000 sq. ft constructed area.

Mintu International Public School is constructed upon an area of more than 30 acres of lush green environment with vast space, pollution free atmosphere, soothing the mind and body in an eco-friendly atmosphere; an oasis of beautiful surroundings which creates an ambience for excellent growth of mind and body to imbibe life skills among the children in their formative age.

At MIPS the hidden talents are harnessed to discover the innate qualities of children which are nurtured further to acquire professional excellence.

At MIPS the emphasis is always on personalized attention and the method of teaching is based on ancient traditional Gurukul pedagogy where the Guru (Teacher) has an exalted position and takes care of the students as his own children and continuously imbibes the Knowledge, life Skills, Values with cultural and social preaching's. The kids who join the school in nascent phase and emulates as grown up and confident human being.

In our website we wish to share with you our enablers which facilitates us in achieving our vision, mission and fulfilling our objectives for our younger generation.